



Alma Street, Queensbury,

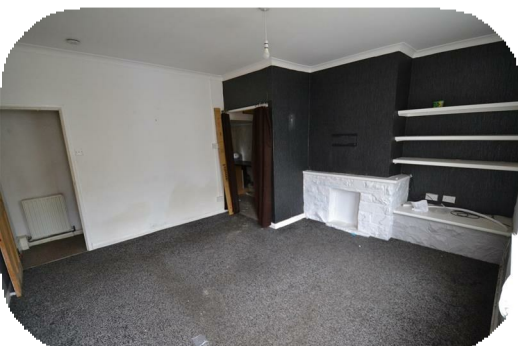
£69,950

**** PUBLIC NOTICE **** Sugdens Estates are now in receipt of an offer for the sum of £66,000 for 15 Alma Street, BD13 2HB. Anyone wishing to place an offer on this property should contact Sugdens Estates, 44 High Street, BD13 2PA before exchange of contracts.

*** END TERRACE * TWO BEDROOMS * POPULAR LOCATION * CLOSE TO AMENITIES *
* IDEAL STARTER HOME * FRONT YARD ***

Attention FTBs/Investors!! Situated in the heart of Queensbury Village which offers local amenities, shops, schools and excellent bus routes is this two bedroom stone terrace property.

The accommodation briefly comprises lounge, kitchen, cellar, two first floor bedrooms and a house bathroom. To the outside there is a small yard to the front.



**** PUBLIC NOTICE ****

Sugdens Estates are now in receipt of an offer for the sum of £66,000 for 15 Alma Street, BD13 2HB. Anyone wishing to place an offer on this property should contact Sugdens Estates, 44 High Street, BD13 2PA before exchange of contracts.

Lounge

15'6" x 13'9" (4.72m x 4.19m)
With double glazed window.

Kitchen

9'8" x 4'1" (2.95m x 1.24m)
With fitted wall and base units incorporating stainless steel sink unit, plumbing for auto washer, double glazed window, cooker point.

Cellar

Useful storage.

First Floor

Bedroom One

8'8" x 7'11" (2.64m x 2.41m)
With double glazed window.

Bedroom Two

10'7" x 6'8" (3.23m x 2.03m)
With double glazed window.

Bathroom

Three piece suite comprising panelled bath, low suite wc, pedestal wash basin, double glazed window.

Exterior

To the outside there is a small yard to the front.

Directions

From our office on Queensbury High Street head west on High St/A647 towards Russell St, continue to follow A647 for 0.3 miles, turn right onto Alma St and the property will shortly be seen displayed via our For Sale board.

TENURE

FREEHOLD

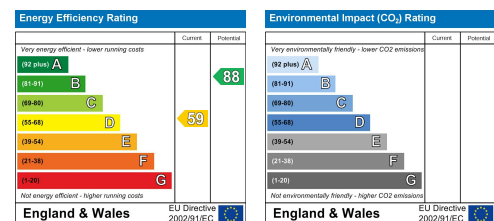
Council Tax Band

A



Consumer Protection

We are providing these details in good faith, to the best of our ability, in obtaining as much information as is necessary for our buyers/tenants, to make a decision whether or not they wish to proceed in obtaining this property under the consumer protection regulations. We are covered and members of The Property Ombudsman.



8 The Green, Idle, Bradford, West Yorkshire, BD10 9PR Tel 01274 619999 email idle@sugdensesates.co.uk
44 High Street, Queensbury, Bradford, West Yorkshire, BD13 2PA Tel 01274 888998 email queensbury@sugdensesates.co.uk
13 Bradford Road, Cleckheaton, BD19 5AG Tel 01274 905905 email cleckheaton@sugdensesates.co.uk
website www.sugdensesates.co.uk